



PHABRIX[®]
broadcast excellence

4:2:2 YUV, 4:4:4 RGB,
4:4:4 YUV
10/12 BIT 3G LEVEL A & B

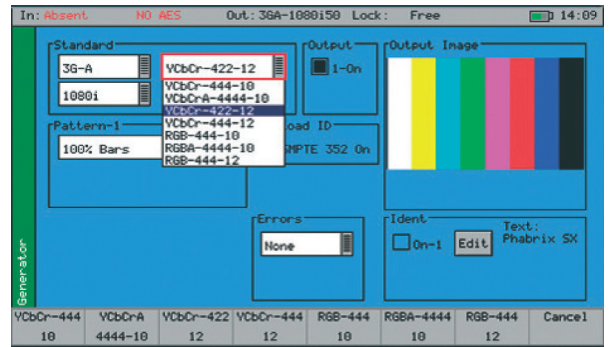
OPTION

ADVANCED FORMATS

The advanced formats option available for the SxA and SxE adds a variety of new formats to the standard set of 76 currently available. These include 4:2:2 YUV, 4:4:4 RGB, and 4:4:4 YUV at 10/12 bit and 3G level A and B.

Once the option code has been entered, the new formats will be shown in the generator selection window as exemplified in the diagram right.

Please note that the PHABRIX SxD has these formats plus additional formats associated with dual link usage,



The formats option adds additional formats available from the drop down menu.

ADDITIONAL FORMATS AVAILABLE

Link Type	Reference Standard	Resolution		Rates									
				60	59.94	50	30	29.97	25	24	23.98		
1.485 Gb/s													
SMPTE 372M	SMPTE 274M	1920 X 1080	4:2:2 (Y'CbCr)/10-bit	P	P	P							
			4:4:4 (R'G'B'), 4:4:4:4 (R'G'B' + A)/10-bit										
		1920 x 1080	4:4:4 (R'G'B')/12-bit	I	I	I	P,sF	P,sF	P,sF	P,sF	P,sF		
			4:4:4 (Y'CbCr), 4:4:4:4 (Y'CbCr + A)/10-bit										
			4:4:4 (Y'CbCr)/12-bit										
SMPTE 428-9	2048 x 1080	4:4:4 (X'Y'Z)/12-bit							P,sF	P,sF			
3 Gb/s													
SMPTE 425-A	SMPTE 296M	1280 x 720	4:4:4 (R'G'B'), 4:4:4:4 (R'G'B' + A)/10-bit 4:4:4 (Y'CbCr), 4:4:4:4 (Y'CbCr + A)/10-bit	P	P	P	P	P	P	P	P	P	
	SMPTE 274M	1920 x 1080	4:4:4 (R'G'B'), 4:4:4:4 (R'G'B' + A)/10-bit 4:4:4 (Y'CbCr), 4:4:4:4 (Y'CbCr + A)/10-bit	I	I	I	P,sF	P,sF	P,sF	P,sF	P,sF		
	SMPTE 274M	1920 x 1080	4:4:4 (R'G'B')/12-bit 4:4:4 (Y'CbCr)/12-bit	I	I	I	P	P	P	P	P		
	SMPTE 428-9	2048 x 1080	4:4:4 (X'Y'Z)/12-bit							P,sF	P,sF		
	SMPTE 274M	1920 x 1080	4:2:2 (Y'CbCr)/12-bit	I	I	I	P,sF	P,sF	P,sF	P,sF	P,sF		
3 Gb/s	Mapping of 2 x SMPTE 292M HD SDI Interfaces			BLUE formats are standard on the SxD and as an option on the SxA and SxE									
SMPTE 425-B	1 x SMPTE-372M dual-link payload			TURQUOISE formats on SxA and SxE as SMPTE 425-B carrying 1 x SMPTE 372M dual link payload									
				RED formats can be detected by the Sx but not fully handled									

Option code

PHSXOF



PHABRIX[®] Limited
Winchester Road, Burghclere, Newbury, Berkshire
RG20 9EQ United Kingdom
tel/fax + 44 (0)1635 255 494
email: info@phabrix.com www.phabrix.com

