



PHABRIX[®]
broadcast excellence

MOVING ZONE PLATE

OPTION PROGRAMMABLE ZONE PLATE

This option adds a range of pre-programmed zone plate patterns along with user defined controls over several parameters which can be saved to custom buffers.

Moving zone plates provide a very useful ‘dynamic’ pattern for testing a range of video processing equipment. Spatial and temporal controls are particularly useful for testing up/down converters, image scalers and applications which compress signals. Frequency sweep testing using the zone plate is particularly useful in determining the usable bandwidth of the system. All formats are supported using this option including 16:9 and 4:3 aspects, each pattern automatically scales for the chosen format.

PRESET ZONE PLATES

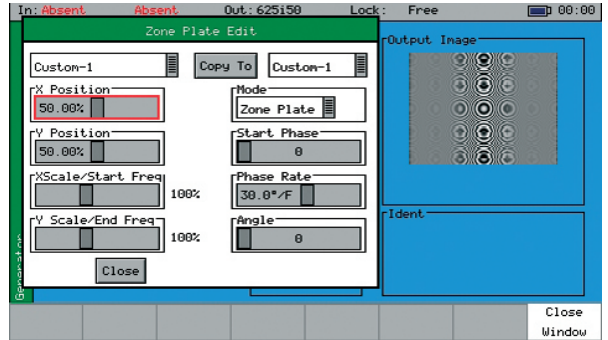
Moving Zone-2H	A moving zone plate centred on the screen.
Static Zone-2H	A static circular zone plate centred on the screen from DC to the nyquist frequency at left/right edges.
Static Zone-2V	A static circular zone plate centred on the screen from DC to the nyquist frequency at top/bottom edges.
Sweep-Horiz	A horizontal sweep from DC to nyquist frequency horizontally
Sweep-Vert	A vertical sweep from DC vertically
Grating 50kHz	A 50kHz frequency sine wave when using an HD output
Grating-1MHz@HD	A 1MHz frequency sine wave when using an HD output

PROGRAMMABLE CONTROLS

Mode	Sets Circular, Linear, Grating, Sweep
Start phase	This sets the start phase of the sinewave generated by the zone plate generator and is set in degrees from 0-360
Phase rate	This is used to set the rate of change of phase of the sinewave and thus changes the speed that the zone plate moves at. It is specified in degrees per frame.
Angle	This changes the angle of the zone plate and thus can change a horizontal sweep into a vertical sweep or rotate an elliptical zone plate pattern.
XScale/Start Freq	This sets the horizontal scale of grating patterns or the start value of the zone plate sweep frequency.
YScale/End Freq	This sets the vertical scale of grating patterns or the end value of the zone plate sweep frequency

Option code

PHSXOZ



The ‘moving zoneplate’ configuration window. Multiple saves of parameters can be made.

FEATURE HIGHLIGHTS

- PROGRAMMABLE ZONE PLATE
- MEMORY STORED SELECTION
- SPATIAL AND TEMPORAL CONTROL
- FREQUENCY SWEEPS
- ALL FORMATS SUPPORTED
- ASPECTS RATIO 4:3 & 16:9

APPLICATIONS

- R&D DEPARTMENTS
- SYSTEM INTEGRATORS
- SUPPORT ENGINEERS

AVAILABLE FOR

- PHABRIX[®] SxA
- PHABRIX[®] SxD
- PHABRIX[®] SxE
- PHABRIX[®] Rx



PHABRIX[®] Limited
Winchester Road, Burghclere, Newbury, Berkshire
RG20 9EQ United Kingdom
tel/fax + 44 (0)1635 255 494
email: info@phabrix.com www.phabrix.com

