



**PHABRIX**<sup>®</sup>  
broadcast excellence

**AVAILABLE  
NOW**

**OPTION**

**COMMAND SCRIPTS**

This option allows a series of pre-defined actions to be run through within the PHABRIX Sx using a script stored in internal memory.

It can be used to automatically step through a sequence of instrument states, controlling the generator, analyser and logging functions. If required the instrument will prompt the user before going onto a subsequent state.

Applications include repeated test sequences as required by manufacturer Test Departments, R&D Departments, Systems Integrators and Commissioning/Support Engineers.

A script requires a set of memories to configure the unit and then a script file which recalls those memories and specifies times and actions for each step. The process of creating a command script requires these two files to activate the sequence.

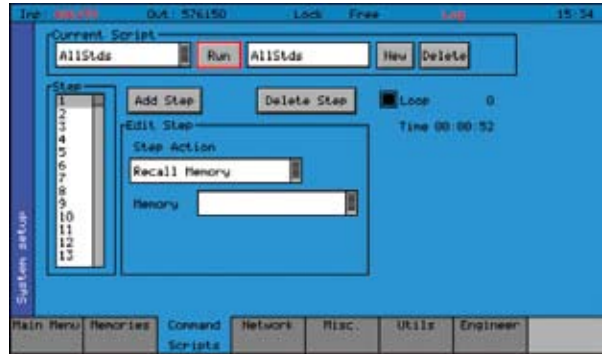
Additionally a script can be created as a simple text file on a PC and then transferred to the unit via Ethernet and recalled at any time. A large number of named scripts and memories may co-exist within the instruments store to be recalled as required.

Examples of the commands available for scripting are as follows:

**STEP ACTIONS**

Recall memory	Loads the memory specified in the memory field
Check in/out errors	Check for EDH/CRC errors in the step Time. Errors will be sent to the log file
Prompt user	Requires action from the operator to continue
Enable/Disable event	Activates or disables the log file
Clear error counts	Clears all EDH/CRC errors
Pause	Defines a wait time
Loop	Allows the script to run until stopped. The loop count shows how long the script has been running in time and loops

Option code                      PHSXOS



The Command scripts window showing the scripting memories and step list

**FEATURE HIGHLIGHTS**

- REPEAT TEST ACTION
- MEMORY STORED SCRIPTS
- CONTROL GENERATOR AND ANALYZER
- EDIT SCRIPTS ON REMOTE PC
- SUPERIOR EASE OF USE

**APPLICATIONS**

- R&D DEPARTMENTS
- SYSTEM INTEGRATORS
- SUPPORT ENGINEERS

**AVAILABLE FOR**

- PHABRIX<sup>®</sup> SxA
- PHABRIX<sup>®</sup> SxD
- PHABRIX<sup>®</sup> SxE
- PHABRIX<sup>®</sup> Rx



**PHABRIX**<sup>®</sup> Limited  
Blindmans Gate Cottage Woolton Hill Newbury  
Hampshire RG20 9XB UK  
tel/fax + 44 (0)1635 255 494  
email: info@phabrix.com www.phabrix.com

