



**PHABRIX**<sup>®</sup>  
*broadcast excellence*

**AVAILABLE  
Q1 2011**



Analyser module



Generator module

Model shown

**PHABRIX<sup>®</sup> Rx A**

Analyzer  
2U Rack Mount

The PHABRIX Rx range adds a 2U rack mounted modular system to its highly successful 3G-SDI, HD-SDI and SD-SDI test and measurement range.

Available quarter 1 2011, the Rx range has been designed for environments such as central control booths, studio engineering panels and OB facilities providing a necessary 'point of excellence' in support of the test and measurement requirements of the broadcast architecture within its control.

Housed in a 19" 2U standard rack mount, the Rx can be configured with one or two modules each allowing separate access to a range of feature sets.

The PHABRIX Rx range benefits from the tried and tested ergonomics of the highly successful Sx range, the two 4.3" colour TFT screens displaying the monitored signal at all times with separate measurement display for generation of patterns and analysis.

Each screen can be calibrated to a user-defined luminescence and the rack itself can be altered to the correct viewing angle if mounted overhead, eyeline or in a desktop position. The unit fits within an industry standard 19" wide rack.

Back connections of the Rx include a 10/100BaseT ethernet port for configuration and control along with BNC connections for the optional 3G or HD. The standard configuration is SD.

The external 4 pin XLR power supply uses an industry standard DIN connector with cord lock and is supplied as standard.



### **FEATURE HIGHLIGHTS PHABRIX Rx**

- Test and Measurement
- Audio Monitoring
- 2U 19" Rack
- Scalable architecture
- Only 15 cm depth
- Low weight
- Low power
- Ethernet
- Superior ease of use
- Cost effective
- OB, Control Room, Studio

### **MODULE CHOICE**

- Analyzer
- Analyzer with Eye and Jitter
- Generator
- AES audio

### **OPTIONS**

- 3G-SDI + HD-SDI



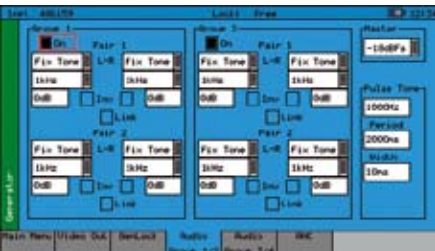
**Standard**



**Top level menu**



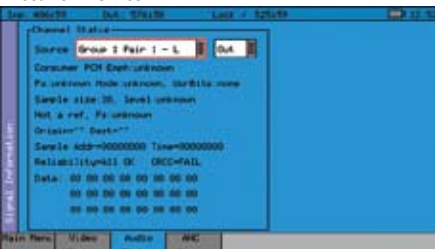
**Waveform**



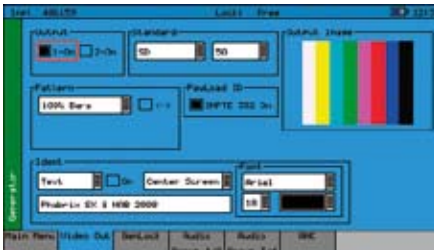
**Audio pair grouping menu**



**Picture Monitor**



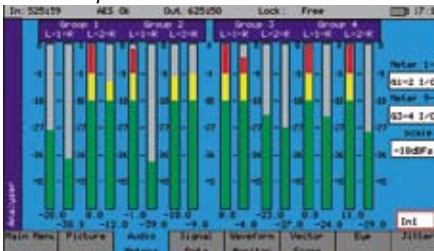
**Audio channel status menu**



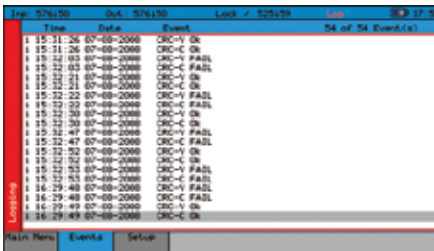
**Video generator**



**Vectorscope**



**16 Channel audio**

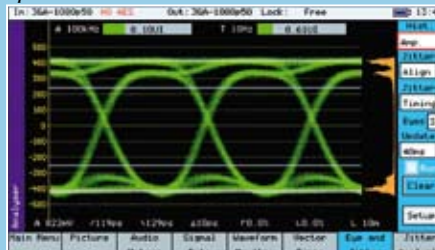


**SDI fault logging menu**



**SDI status and payload menu**

**Options:**



**EYE menu**



**Jitter menu**



**Signal Data menu**



**Signal Ancillary data display**



**Script command window menu**

**\*Models Available:**

**Single Monitor**

- PHABRIX Rx A
- PHABRIX Rx E
- PHABRIX Rx C

Single generator/monitor  
 Single analyser + eue and jitter monitor  
 Single analyser/monitor with Eye and Jitter

STEREO SPEAKERS INCLUDED

**Dual Monitor**

The Rx cmes with two screens as standard. One screen is full time monitoring of the video signal and the second screen for instrumentation control.



**PHABRIX® Limited**  
 Blindmans Gate Cottage Woolton Hill Newbury Hampshire RG20 9XB UK  
 tel/fax + 44 (0)1635 255 494 email: info@phabrix.com www.phabrix.com

\*Specifications and features described herein are subject to change without prior notice. Please consult our website www.phabrix.com for the latest data. PHABRIX is a registered trademark.

**ORDERING INFORMATION**  
**Hardware**

Please specify modules required when placing order.

**Options**

Please see separate product sheet for available engineering upgrade options.