

Rx Presets Application Notes

Overview

One of the most powerful aspects of the PHABRIX Rx system is the implementation and use of presets to save sophisticated system set-ups for analyser, generator, system configuration and screen layouts as a single recallable item.

As the Rx system is modular in every aspect, presets allow users to save implementation-specific settings. These can be recalled by a single button press as needed.

In video production and transmission, one scenario commonly used is to have industry familiar layouts for multi-input monitoring, quad split, video parameters and audio parameters for each input being monitored. When an issue is seen on the multi-input view then more detailed information can then be displayed for the specific input that has the issue.

Manufacturers on the other hand may use presets in layers. The main presets are used to display instruments on screen and the secondary presets just change the settings of generators and analysers.

Presets can be easily created, saved and backed-up for security. The saved presets can be recalled directly from the Rx front panel, via the soft buttons along the bottom of the HDMI monitor output, via the web-browser interface and remotely using the PHABRIX Remote Control system allowing the Rx system to be completely reconfigured for each application if required. This makes it ideal for production environments where automated testing is taking place on different products.

To create a preset, first setup the screen and instruments as required, then save this using the Save Preset function.

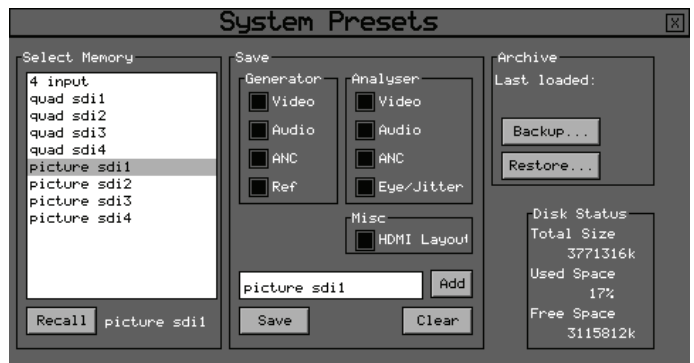


HDMI monitor output of Rx instrument

Defining Preset Content

When the Prst Menu - Save Preset function is selected the System Presets screen is displayed.

The check boxes on the right-hand side of this menu determine what aspects are to be saved within the preset. Layered and non overlapping presets, which cover different aspects, may then be combined together. For example saving generator settings or HDMI setting separately without affecting analyser settings.



Generator Section

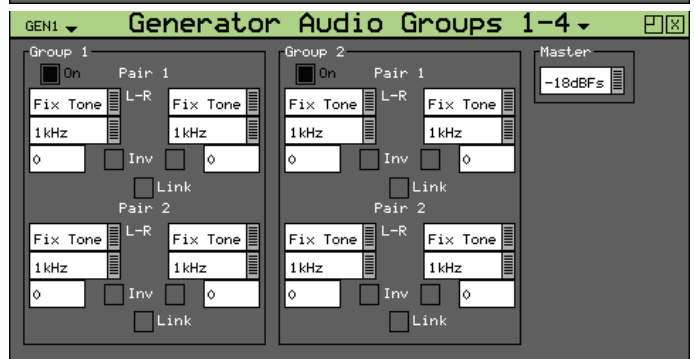
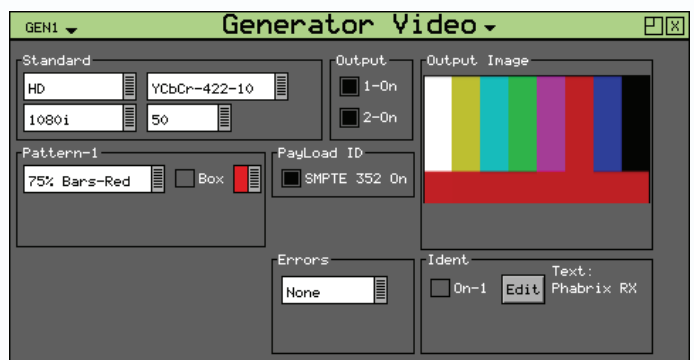
The Generator section controls the settings of all Generator modules installed in the system, but does not include the on-board test pattern generator which is considered a system-wide function with only its current state saved:

Video - if this check box is selected then the Generator video format, line rate and frame rate settings for all Generator modules will be saved as part of the preset.

Audio - if this check box is selected then the Generator Audio tone settings for Group 1, 2, 3 and 4 for all Generator modules (including 4AES modules) will be saved as part of the preset. This also covers any Dolby metadata settings.

ANC - not currently used.

Ref - if this check box is selected then the Generator Genlock timing settings for all Generator modules will be saved as part of the preset.



Analyser Section

The Analyser section controls the settings of all Analyser modules installed in the system:

Video - if this check box is selected then the configuration of the Picture, Waveform, Vectorscope and Video Timing instruments for all modules will be saved as part of the preset. This also saves the System Reference selection.

Audio - if this check box is selected then the configuration of the Audio Meters, Loudness Meters, Dolby Metadata Analyser, Lissajous display instruments will be saved for all Analyser modules (including 4AES modules) as part of the preset.

ANC - if this check box is selected then the configuration of the ANC Inspector and ANC Logging setup for all Analyser modules will be saved as part of the preset.

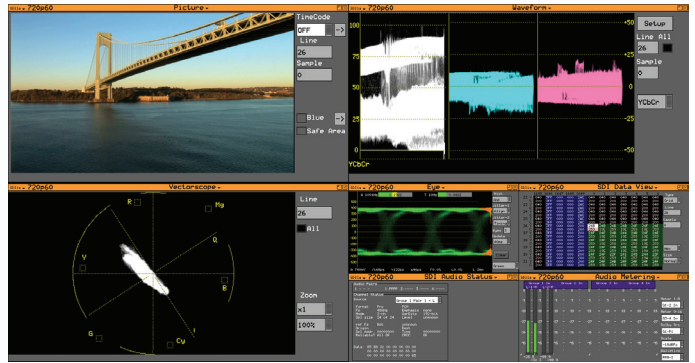
Eye / Jitter - if this check box is selected then the configuration of the Eye and Jitter instruments and Eye Log Setup settings for all Eye modules is saved as part of the preset.



Misc Section

The Misc section, HDMI check box if selected will save the screen layout as part of the preset.

If only the HDMI check box is selected then only the instrument layout will be saved and not the instrument settings.



Saving Presets

The current setting of all analyser windows, generator windows and HDMI layout can be saved as a single preset.

Select the “Prst Menu” button in the bottom left corner of the HDMI output display and select the Save Preset option to open the System Presets menu.

Select the Add button to create a new preset. If you want to use the name of an existing preset, select it from the ‘Select Memory’ list by clicking on it with the mouse.

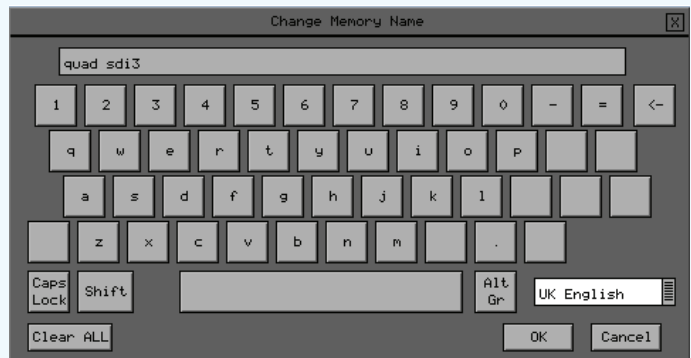
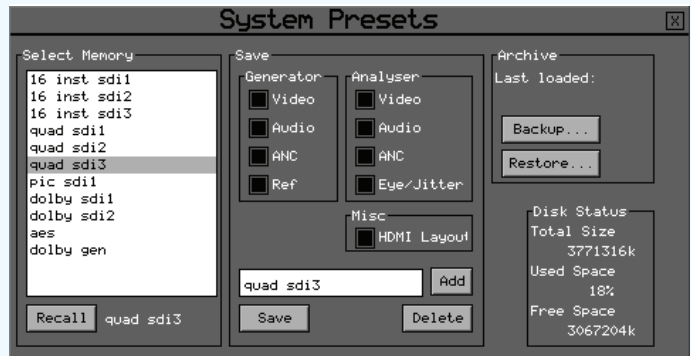
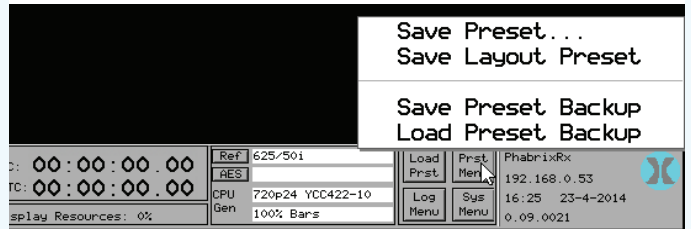
Specify which aspects (generator/analyser, video/audio/ancillary settings and HDMI layout) of the Rx instrument are to be saved in the memory using the check boxes on the right hand side.

The name edit field next to the memory list will be updated with the name of the new or selected memory.

If you want to change the name of the preset click on the name edit field and a keyboard appears on screen. Edit the name of the preset then select the OK button to use this. Note the new name is not yet saved.

Move the cursor to the ‘Save’ button and press ‘OK’. The text field under the Memory list will change to show the last Saved or Recalled memory.

The new preset will now appear in the list and be available for use.

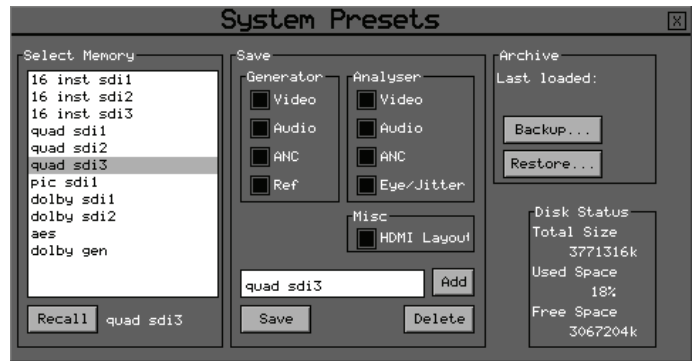


Recalling Presets

Presets can be recalled in a range of different ways depending on which part of the Rx control system you are using. Presets can be recalled using the System Presets menu itself. To do this click on the required preset using the mouse and then select the Recall button.

Presets can be recalled using the preset buttons along the bottom of the HDMI output display or the Load Prst button on the right of the task bar. Note this can also be done via a web browser.

Presets can be recalled using the dedicated buttons on the Rx front panel.



Renaming Presets

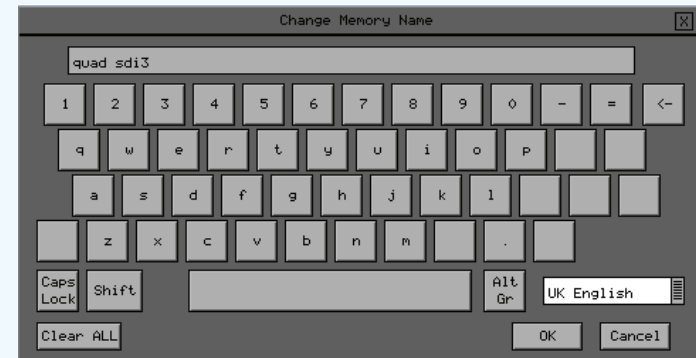
Select the preset to be renamed from the 'Select Memory' list by clicking on it with the mouse. The name edit field next to the memory list will be updated with the name of the selected memory.

Click on the name edit field and a keyboard appears on screen. Pressing a key repeatedly will cycle through the characters for that key. Pressing a different key will move the cursor to the next position and insert the first key value for that key.

The cursor left and right keys can be used to move the position of the text cursor which is where the next character will be inserted.

The 'Back Space' key will delete the key to the left of the cursor. The 'Cancel' key will cancel edit mode and restore the original text.

Once you have finished editing the name, press 'OK' then the 'Save' button to save the changes.



Exporting Presets

Presets can be exported to a single file for backup purposes and re-imported into the system when required. This allows different sets of memories to be used for different tasks, such as command scripts. Exported memories are in a text format and so may be edited on a PC and downloaded to/from the backups directory on the Rx instrument via FTP or via USB.

The Memory Backup/Restore menu is accessed either from the System Preset menu or directly from the task bar under the "Prst Menu"

